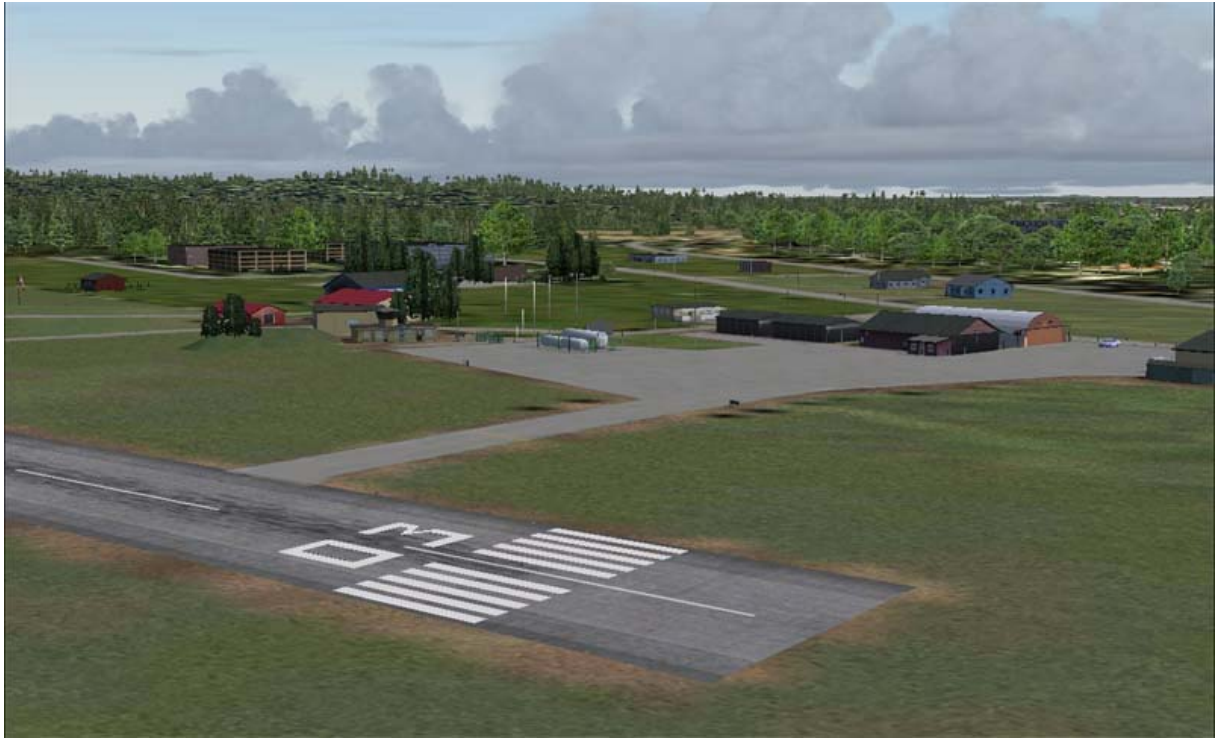


# Karlskoga/ESKK ver 1.0

By Peter Augustesen



The field is situated west, just outside Karlskoga. It began as a grassfield for soaring in the year of 1935. The Rwy was paved 1974 and have been lengthened several times from 900 m's to 1500. In the year 1984 Eskk was the fifth airfield in Sweden for traffic overseas. Nowadays there are two companies at the field, Charleswood Air AB and Aeroservice AB, and two flying clubs, Karlskoga Segelflygklubb och Karlskoga Motorflygklubb.

## Features :

The windsock is moving with the strength and direction of wind.  
Vehicle traffic around and to the airfield, depending of time of day.  
The Rwy light is activated by setting Com1 on 122.55.  
As the real field the Rwy have high intensity light when the visibility is low.  
The highintensity light is the only active daytime.

The scenery works well together with UT or Taburet's SRW and Sweclass but not with "Norway scenic".

**Attention !!** The windsock, the flags, the cars and some other objects are "dynamic objects" which means that you have to have "Options/Settings/Display/Add-on Dynamic scenery" checked, otherwise they are not visible. The slider must be at least at "dense".



## Installation :

- Unzip in a folder of your own choice, i.e the "Addon scenery".
- In the folder "ESKK" there are two folders, scenery and texture.
- In the sceneryfolder there is one more folder containing the LC-file, which has to be installed separately.
- In the ToModules folder there are two dll's, VimaCore.dll and VimaIScn.dll. These goes to the modulesfolder of FS. These files must be present, otherwise CTD!!
- Activate the scenery and the LC-file and fly !

## Credits ;

Foremost to Lars Mårtensson for all research, suggestions and testing !!

Hans Ramberg and Rune Jarding for beta testing!

Lars Hoyer , cars

Harald Kraft , cars

Steven Legg , cars

E. Björnwall & L Arvidsson, extra textures.

Maurizio Gavioli for providing the IntelliScen interface.

## IntelliScen briefly.

It's an extension for the scenery with more possibilities to manipulate variables and with a lot of built-in functions.

Many thanks goes to Maurizio Gavioli for all encouragement and support !

More info on IntelliScen : <http://www.vistamaresoft.com/fs/IntelliScene.html>

Bugreports, encouragement, suggestions to

[p.augustesen@chello.se](mailto:p.augustesen@chello.se)

#### LEGAL STUFF

This scenery is created as freeware and the scenery, or parts from it, may not be redistributed in any other form.

The files ViMaCore.dll and ViMalScn.dll belongs to VistaMaresoft.

Thanx for reading.